

The Best from Haase

50 years expertise in GRP:

SURFACE AND SUB-SURFACE TANKS

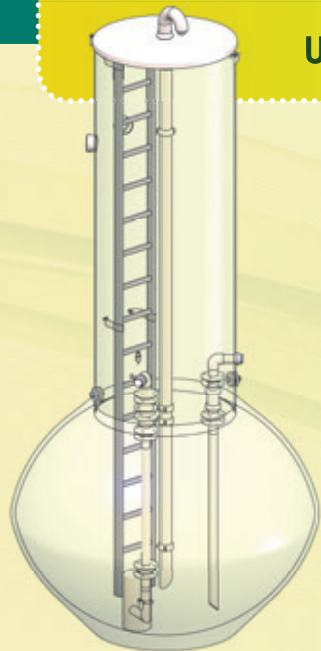
OIL AND GREASE SEPARATORS

HOT WATER TANKS

LINERS



www.haasetank.de



UNDERGROUND TANKS

APPLICATIONS Industrial underground tanks from Haase are suitable for storing water-hazardous fluids such as chemicals and waste water and have DIBt General Technical Approval. The tanks are conceived and equipped according to the requirements and wishes of the customer.

DESIGN The tanks are triple-walled, spherical, glass fibre reinforced plastic vessels (GRP). An automatic leakage indicator permanently monitors the tank for leak-tightness. With an appropriate manhole cover, they can be trafficked with loads of up to 40 tons.

ADVANTAGES

- ➔ Chemically resistant, dimensionally stable, corrosion-free
- ➔ Extremely robust and resilient, for pedestrian and trafficable areas
- ➔ Permanent leak-tightness monitoring
- ➔ Simple maintenance by means of inspection manhole



The number and execution of the connections and valvework can be agreed individually to customer.



The tanks are offered with a usable volume of between 2,500 and 15,000 litres and can be installed with an economical design-approved flotation safe-guard.



FLAT BOTTOMED TANKS

APPLICATIONS The Haase flat bottomed tanks can be designed and installed for virtually every application using special chemically resistant resins. The tanks are suitable for indoor and outdoor installation.

CONSTRUCTION The choice can be made between factory or on-site assembly depending on size and customer requirements. The dimensions are variable in height and diameter. The Haase tanks are designed as double or single-walled cylindrical vessels. Double-walled tanks can be supplied with a leakage indicator device for automatic leak-tightness monitoring.

ADVANTAGES

- ➔ Odour-tight, ageing and weather resistant, temperature-stable
- ➔ No bund wall necessary
- ➔ On-site assembly up to 100,000 litre volume
- ➔ Very flexible in terms of number, arrangement and material of the connections and valvegear
- ➔ Approved for earthquake zones
- ➔ Suitable for flood zones
- ➔ Trafficable manhole entry



The corrosion-free GRP material also enables outside installation of the Haase tanks. At the request of the customer, vessel heating can be installed and the tank insulated. The surface of the material can be finished in any RAL colour.



Flat bottomed tanks from Haase can be integrated seamlessly into complex plants and designed as hot or cold water tanks.



On-site assembly means that large storage capacities can be achieved even under difficult access conditions. With diameters of up to 4.00 metres and heights of up to 10.0 metres, practically any space can be utilised to the optimum.

LIGHT LIQUID SEPARATOR



Installation in a trafficable area is possible without elaborate on-site works.



The manhole shaft is seamlessly laminated to the triple-walled tank body – the GRP separator thereby combines the chemical resistance of plastic with the stability of concrete.

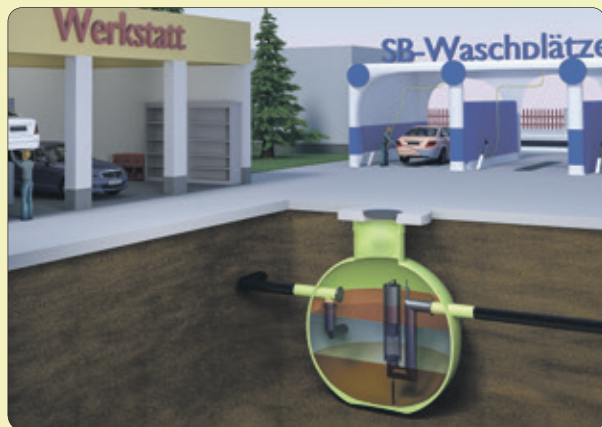


At the request of the customer, the separator can be installed by one of the company's own special vehicles directly into the pit.

NEW:

LPA coalescing separator with drainage plug

and integrated sludge trap; also with or without sampling point



PERMANENTLY LEAK-TIGHT

The manhole shaft is laminated on at the factory, so there are no seams.

HIGHLY RESILIENT

Due to the three-layer wall construction, the separator can be driven over without on-site concreting work.

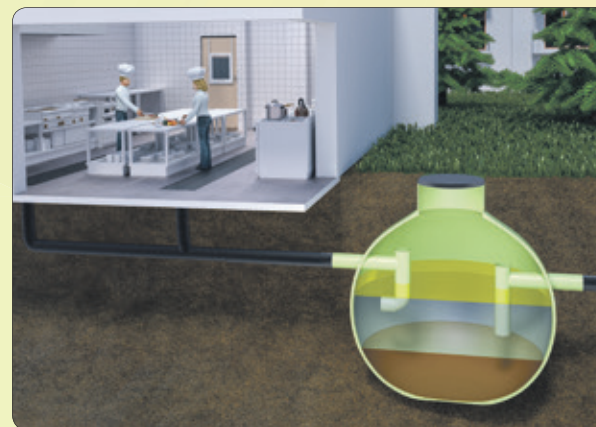
ADVANTAGES

- ➔ Low-maintenance operation and consistent cleaning performance due to the filterless coalescence insert
- ➔ Rapid leak-tightness testing without fitting costs
- ➔ Maintenance opening for flushing the inlet line
- ➔ Future-proof investment as no remediation costs accrue

GREASE SEPARATOR

GRP MAKES IT POSSIBLE

Glass fibre reinforced plastic is absolutely resistant to aggressive fats, acids and vapours



NO FOLLOW-UP COSTS

No peeling coatings or leaky seams in the chamber construction

LOW WEIGHT

Fast installation without heavy-duty crane even where groundwater is present

ADVANTAGES

- ➔ Fittings entirely from plastic
- ➔ Problem-free access through DN 1,000 shaft
- ➔ Simple cleaning due to spherical form
- ➔ 5 ¼ year guarantee on leak-tightness and function



The shaft can be adapted on-site without seams to the given installed depth.



Due to the low weight and compact design, installation can be implemented quickly and straightforwardly.

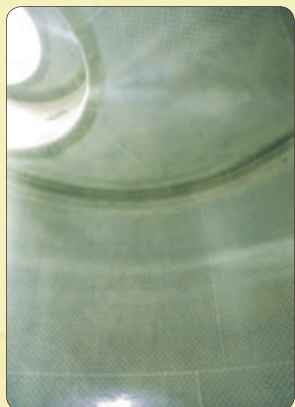


Inlet and drainage on Haase separators are leak-tight laminated and connected to the waste water line with approved articulated pipe and couplings.

GRP LINERS



The material glass fibre reinforced plastic is light, practically maintenance-free and also corrosion and weather resistant.



The GRP panels are factory prefabricated. Only the connection points have to be laminated on site – that saves time and therefore money.

Prefabricated laminates for the renovation of separators, clarifiers and chemical storage

THE PERSUASIVE ADVANTAGES

- **Fewer working stages**
Saves elaborate preparation work such as sandblasting or grinding of the surfaces
- **Clever positioning**
Rolled up like a carpet, cramped access conditions present no problem.
- **Robust under mechanical stresses**
The laminate is laid against the walls and not applied like conventional coatings
- **Time saving**
Due to the short drying times and reduction of the laminating work to the connection points



Due to the dimpled underside of the GRP laminate, possible irregularities in the substrate are evened out. At the request of the customer, a protective paint can be applied.

COLD AND HOT WATER TANKS



The charging and discharging can be via flange, internal heat exchanger or stratification system.



On-site assembly enables the installation of very large storage tanks even under difficult access conditions.



Depending on requirements, heights of between 1.50 metres and 8.90 metres and diameters of 1.30 metres to 4.40 metres are possible.

APPLICATIONS Haase hot water tanks can be conceived, designed and assembled for virtually any application: air conditioning, heating plants or heat recovery in small, medium or large establishments.

CONSTRUCTION Assembly can be directly on-site or in the factory. Height and diameter are plant-specifically adapted to the given situation. The hot water tanks are suited equally well to inside or outside location.

ADVANTAGES

- Long-lasting and corrosion-free
- Optimum weight distribution
- Problem-free on-site assembly up to 100,000 litres volume
- No expansion tank necessary
- Minimal heat loss due to GRP and effective insulation



Haase hot water tanks can be installed both within buildings and outside.

SAFE, CLEAN, COMPLETELY ODOUR-TIGHT



Haase offers, at the request of the customer, turnkey installations of sub-surface tanks.

THE CLASSIC

Sub-surface GRP heating oil tank

- Corrosion-free and extremely stable
- Approved for trafficable areas and in flood-endangered zones
- Automatic leak monitoring
- Cost-efficient floatation safeguard possible

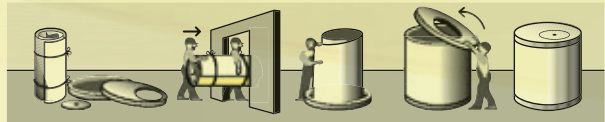


Due to the transparent tank wall, the fluid level can be read at all times without problem.

THE INDIVIDUAL

GRP heating oil cellar tank

- Can be assembled on-site
- Over 100 different tank sizes
- Double-walled and odour-tight
- Dimensionally stable and corrosion-free
- Approved for flood-endangered zones



Haase Tank GmbH

The Haase Group, originally domiciled in Neumünster, became known for the double-walled sub-surface tank bearing the slogan „I am two oil tanks“. In 1999 Haase was founded as an independent company in Grossröhrsdorf near Dresden and today unites the entire Haase product range at this location. With almost 50 employees, the company produces tanks, hot water tanks, separators and many more special products in GRP in a modern production plant.

